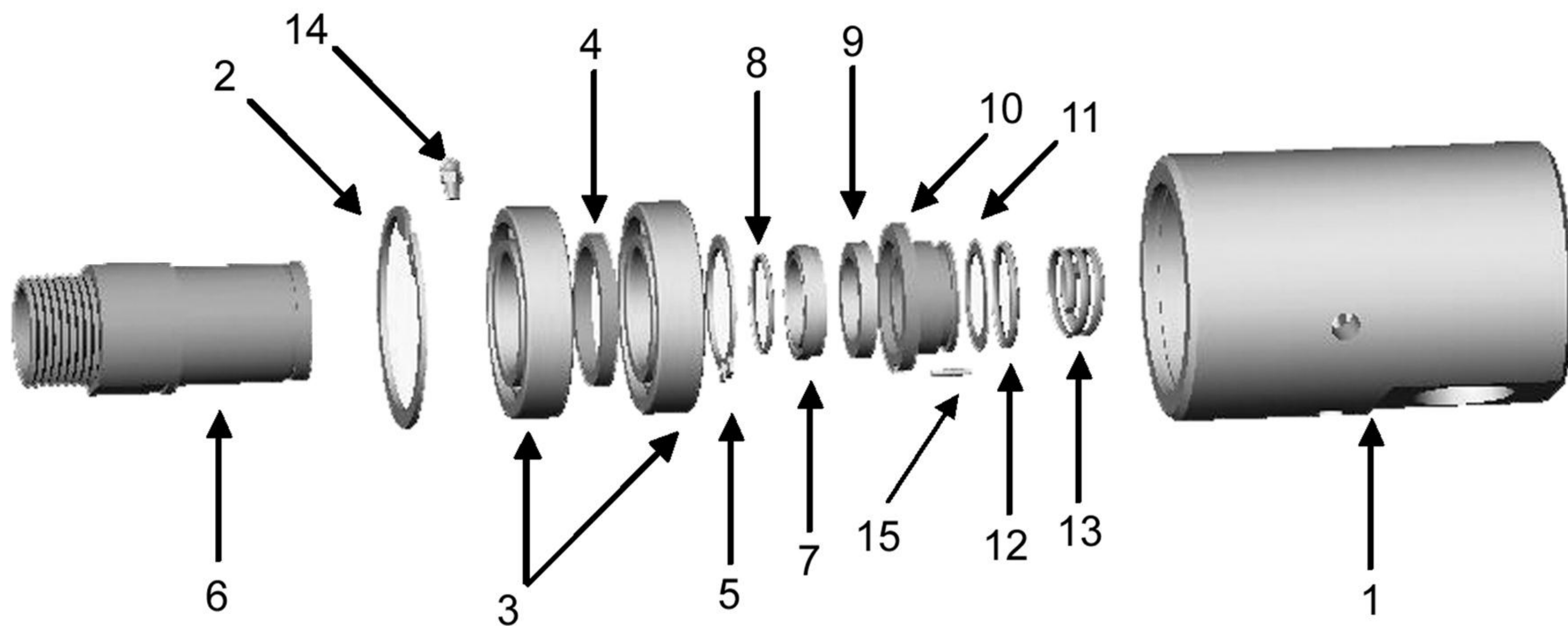


3000N Series Rotary Joint

Disassembly & Maintenance Instructions

Document No	TL 7 17EG
Release Date	01.05.2008
Rev No	00



Spare Parts Set

NO	PART NAME	QTY
7	SEAL RING	1
8	O-RING	1
9	FLOATING SEAL RING	1
10	FLOATING SEAL HOLDER	1
11	O-RING	1
13	SPRING	1

Not: Read all of the maintenance instructions and safety procedures before proceeding.

1. Close outlet and inlet valves and wait for all the medium in the system to be drained completely. If hot medium is used, wait for the rotary joint to cool down to normal temperature.
2. First of all, disconnect the inlet and outlet hoses from the pipes or valves without applying force on the housing.(1)
3. Disconnect the shaft (6) from the machine. Now the joint is ready for maintenance.
4. Hold the rear of the rotary joint with a bench vise.
5. Disconnect the inlet and outlet hoses from the rotary joint.
6. Put the housing on a clean table on to the backside of the housing and disassembly the grease ring(14).
7. Because of the force of the spring (13), first press the shaft from the threaded side and while pressing the shaft remove the internal retaining ring(2) with a snap ring pliers.
8. Because of the pressurized spring inside, in order not to pop of the floating seal group (9-10); take out the internal shaft and bearing(3) assembly slowly.

9. Inspect the shaft and the bearings. If they show excessive wear, than change them with the new ones.

10. Take out the floating seal group (9-10) and the spring(13). Inspect the seal ring(7) and the floating seal group(9-10). Replace them with the new ones if necessary.

11. Clean the internal part of the housing with a clean material. Pay attention not the leave any dirt, burr, etc. inside the housing.

12. Assemble a new spring and the floating seal group. Pay attention to the o-ring(11) on the floating seal holder. In order to assemble the joint, the pim(15) in the housing and the pim socket on the floating seal holder(10) must be corresponding.

13. With holding the shaft from the threaded end assemble it into the housing and connect the internal retaining ring.

14. Assembly the grease ring and lubricate the joint with the appropriate oil. Do not lubricate from the vent holes

15 Hold the rear of the housing with a bench vise and connect the inlet and outlet hoses.

16. Pay attention not to assemble the joint eccentricly when assembling the joint to the machine.

17. Now the joint is ready to be placed back in service

ROTOTECH MAKİNA SAN. VE DIŞ. TİC. LTD. ŞTİ.

Perpa Tic. Merk. B Blok K:2 No:27

Şişli - İstanbul - Rep. Of TURKIYE

+90 (212) 320 02 33

+90 (212) 320 02 34

+90 (212) 320 06 73

www.rototech.com.tr

email:info@rototech.com.tr

