

**INSTALLATION, OPERATION AND
MAINTENANCE INSTRUCTIONS**

Document No: TL 7 16 EG
Release Date: 01.05.2008
Rev. No: 00

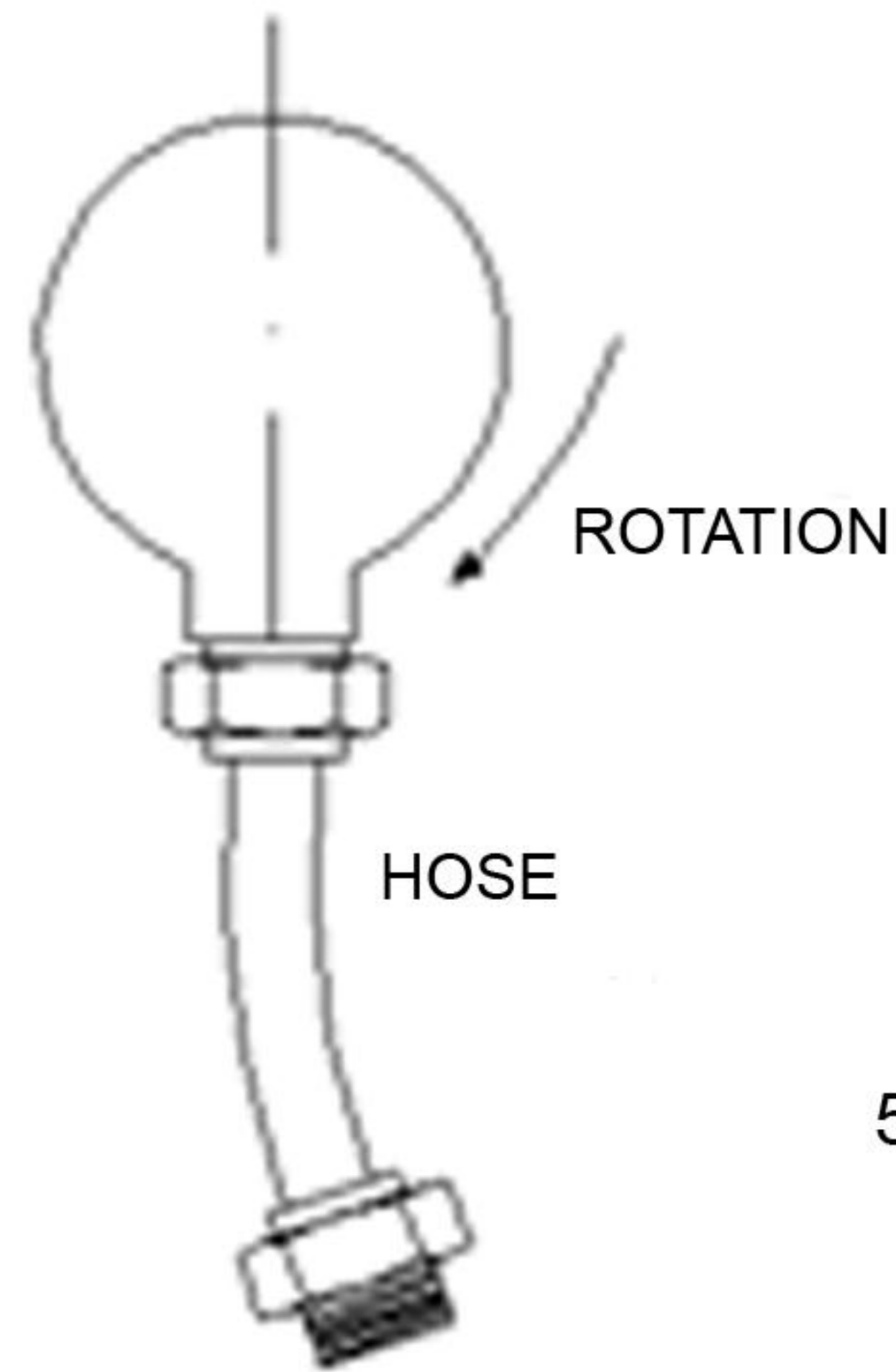
3000N SERIES

SIZES: 1/4", 3/8", 1/2", 3/4", 1"
1 1/4", 1 1/2", 2"

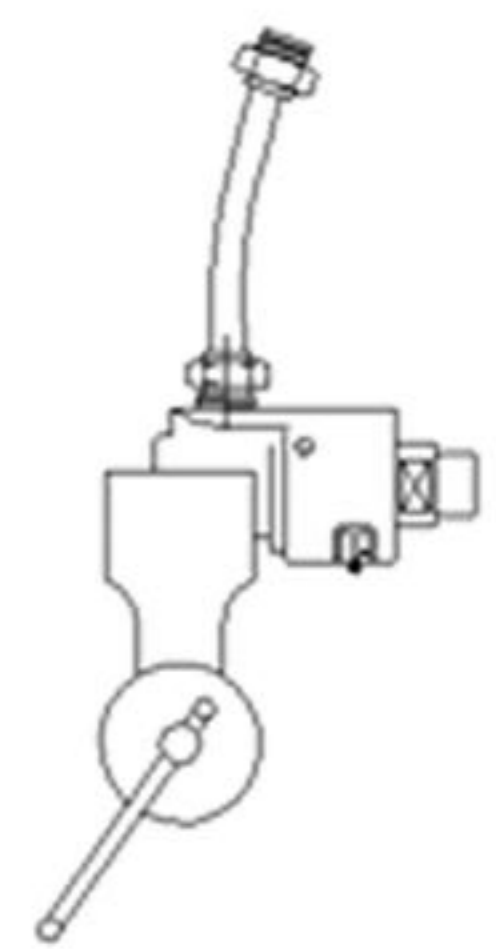
SINGLE FLOW, DUAL FLOW

INSTALLATION INSTRUCTIONS:

1. Do not anchor rotary joint. Rotary joints are designed to float with the flexible hoses.
2. Do not pipe directly. Always use flexible hoses.
3. Install hose with curve in direction of rotation.
4. 3000N Series are designed for max. 50 bar (750 PSI) and 150°C.
5. Only cold water is permissible for applications higher than 8 bar. For other applications higher than 8 bars, please contact factory.
6. For flanged connections, quick release shafts are available for all sizes.
7. Unless specified, all 3000N Rotary Joints are shipped as P-type.
8. All 3000N Rotary Joints has a standard P type housing. S type and RSP type joints consists of P-type housings with the appropriate elbow (S or RSP) type.
9. Always flood the Rotary Joint and purge any entrapped air in the system before operating the machine to improve joint performance and longer joint life.

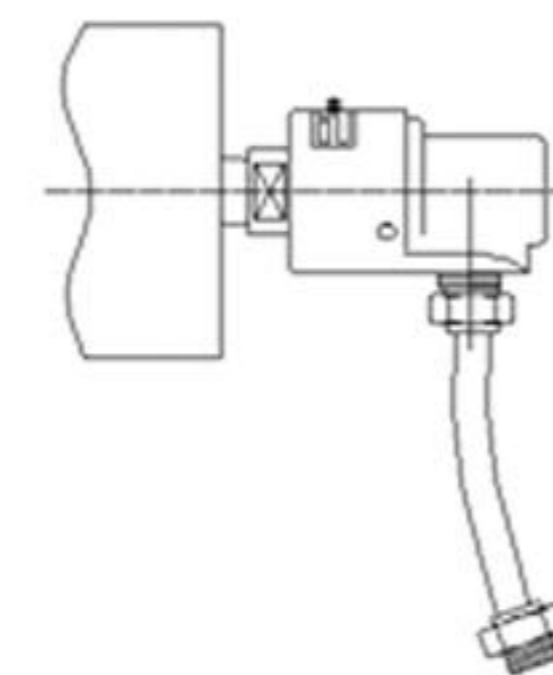


INSTALLATION



1. First hold the rear of the joint in a bench vise and assemble the flexible hoses.

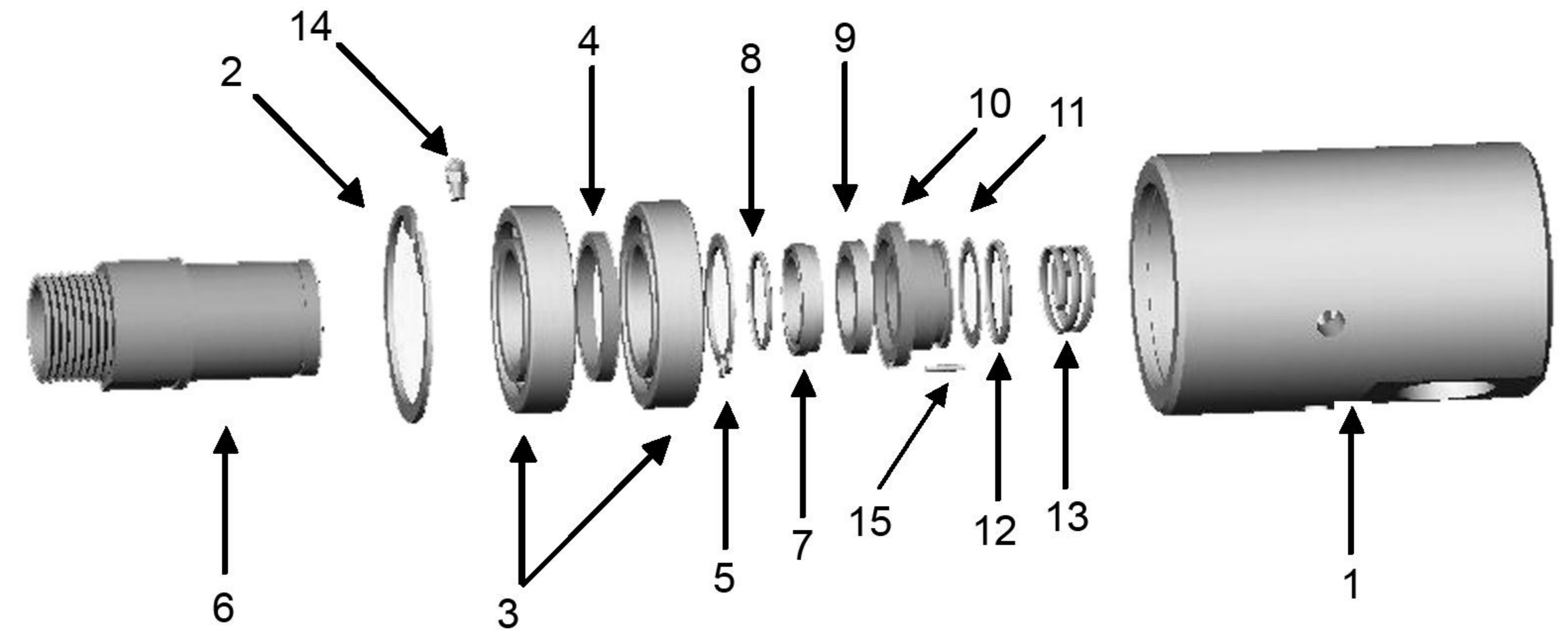
2. After assembling the hoses, install the joint to the machine. When installing, pay attention not to install eccentrically.



3. Connect supply and return lines to the hoses. Control the flexibility of the hoses. Be sure that the hoses are flexible and will be flexible under the pressure and temperature of the medium. Never install the joint directly to the supply and return pipes.

4. After assembling, check if running is smooth. If not, disassemble the joint and assemble it again.

3000N SERIES SPARE PARTS LIST



NO	PART NAME	QTY	NO	PART NAME	QTY
1	HOUSING	1	8*	O-RING	1
2	INT. RETAINING RING	1	9*	FLOATING SEAL RING	1
3	BALL BEARING	2	10*	FLOATING SEAL HOLDER	1
4	SPACER	1 (3/8"-1/2") 2 (3/4"-2")	11*	O-RING	1
5	EXT. RETAINING RING	1	12	SPACER	1
6	SHAFT (RIGHT HAND / LEFT HAND / QUICK RELEASE)	1	13*	SPRING	1
			14	GREASE RING	1
7*	SEAL RING	1	15	PIM	1

* Spare parts set

SEALING

Always maintain the fluid level in the system at a level higher than the top of the Rotary Joint to insure lubrication of the seal surfaces with the inter passing fluid and dissipate the heat generated by friction between the seal faces.

BEARING

All 3000N Series Rotating Joints must be lubricated periodically. For high temperature applications, always use high temperature resistant oils and always lubricate the joint before assembling. Do not lubricate from the vent holes on the housing.

ROTOTECH MAKİNA SAN. VE DIŞ. TİC. LTD. ŞTİ.

Perpa Tic. Merk. B Blok K:2 No:27

Şişli - İstanbul - Rep. Of TÜRKİYE

+90 (212) 320 02 33

+90 (212) 320 02 34

+90 (212) 320 06 73

www.rototech.com.tr

email:info@rototech.com.tr