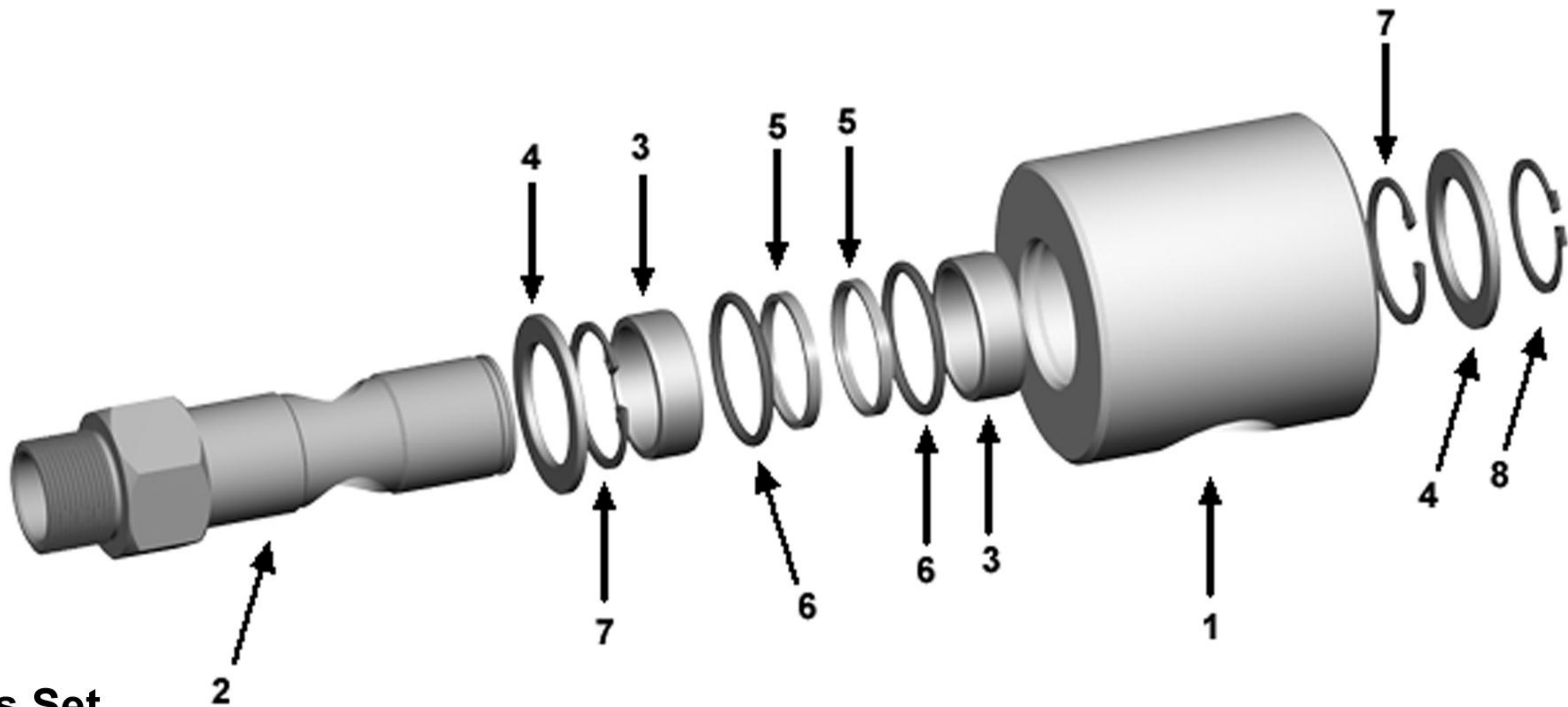


5000 Series Rotary Joint Disassembly & Maintenance Instructions

Document No	TL 7 26EG
Release Date	01.05.2008
Rev No	00



Spare Parts Set

NO	QTY	PART NAME
5	2	BACK-UP
6	2	O-RING

Not: Read all of the maintenance instructions and safety procedures before proceeding.

1. Close inlet valve and wait for all the medium in the system to be drained completely.
2. Disconnect the inlet hose from the pipes or valves without applying force on the housing(1).
3. Disconnect the shaft (2) from the machine. Now the joint is ready for maintenance.
4. Hold the rear of housing of the rotary joint with a bench vise.
5. Disconnect the inlet hose from the housing
6. Put the housing on a clean table and remove the external retaining ring (8) and the bronze ring(4).
7. Take out the shaft (2) from the housing(1) carefully and pay attention not to damage the internal parts. Inspect the shaft and if shows excessive wear, than replace it with a new one.
8. Remove the internal retaining rings (7) from both sides of the housing.
9. Take out the bronze bearings (3) from both sides of the housing.
10. Take out the back-ups(5) and o-rings(6) from their sealing sockets carefully with an appropriate tool.

11. Inspect all internal parts and if they are damaged or deformed, replace them with new ones.

12. Clean the internal part of the housing with a clean material. Pay attention not the leave any dirt, burr, etc. inside the housing.

13. Put the housing on one side on the table and place new back-ups and o-rings inside the sealing sockets.

14. Place the bronze bearings inside the housing from both sides and assemble the internal retaining rings.

15. Clean the shaft carefully and place the bronze ring on the shaft.

16. Lubricate the internal parts of the housing with good quality grease. Be careful not to damage internal parts of the housing when assembling shaft into the housing.

17. Put the bronze ring on the shaft and assemble the external retaining ring.

18. Hold the rear of the housing with a bench vise and connect the inlet hose.

19. Pay attention not to assemble the joint eccentrically when assembling the joint to the machine.

20. Now the joint is ready to be placed back in service

ROTOTECH MAKİNA SAN. VE DIŞ. TİC. LTD. ŞTİ.

Perpa Tic. Merk. B Blok K:2 No:27

Şişli - İstanbul - Rep. Of TURKIYE

+90 (212) 320 02 33

+90 (212) 320 02 34

+90 (212) 320 06 73

www.rototech.com.tr

email:info@rototech.com.tr

