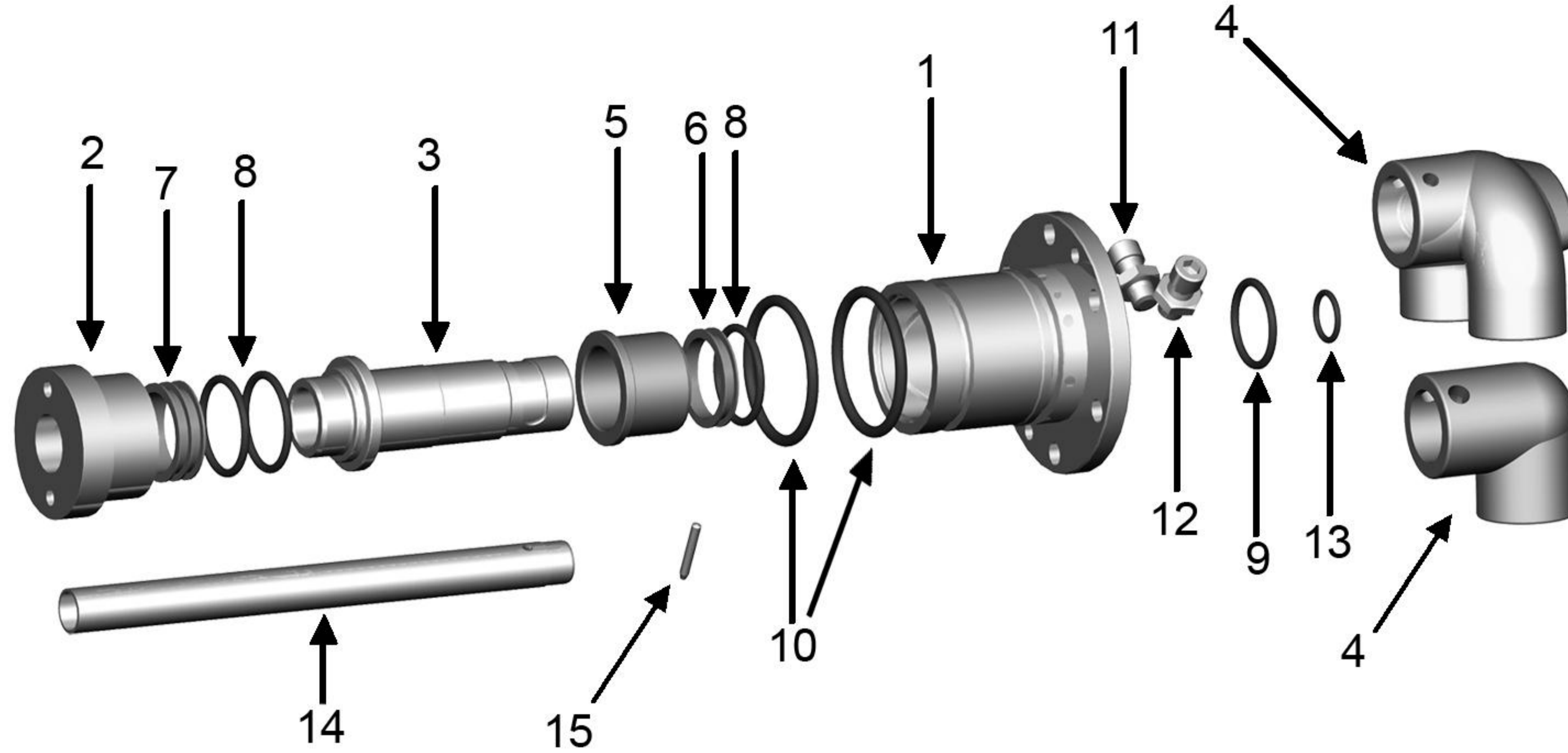


1000C Series Rotary Joint Disassembly & Maintenance Instructions

Döküman No | TL 7 51 EG
Yayın Tarihi | 01.05.2008
Rev No | 00



Spare Parts Set

NO	MALZEME ADI	ADET
6	SINGLE U-CUP **	1
7	DOUBLE U-CUP **	1
8	SEAL O-RING **	3
9	ELBOW O-RING**	1
10	HOUSING O-RING**	2
13	SIPHON PIPE O-RING **	1

Not: Read all of the maintenance instructions and safety procedures before proceeding.

1. Close outlet and inlet valves and wait for all the medium in the system to be drained completely.
2. First of all, disconnect the inlet and outlet hoses from the pipes or valves without applying force on the housing.(1)
3. Loosen the bolts and nuts on the elbow(4) and take out the elbow and hoses from the shaft(3).
4. Disconnect the housing flange(17) from the machine by removing bolts with appropriate wrench.
5. Take out the housing of the joint slightly from the machine. Now the joint is ready for maintenance.
6. Hold the housing of the rotary joint with a bench wise.
7. Disassemble the end cap(2) with appropriate tool.
8. Remove the double u-cup(7) and o-rings(8) from the end cap.
9. After taking out the shaft(3) and bearing(5) from the housing, remove the single u-cup(6) and o-ring(8).
10. Clean the internal part of the housing with a clean material. Pay attention not to leave any dirt, burr, etc. inside the housing.
11. Inspect the shaft and the bearing for wear and corrosion; if necessary replace them with new ones.

12. Assemble a new single u-cup and o-ring into the housing with slight grease.

13. Lubricate internal and outside of bearing and assemble it into the housing.

14. Clean and lubricate outside of the shaft and assemble it into the housing. Be sure that the shaft is in its' place. While assemble be careful not to damage single u-cup and o-ring.

15. Lubricate internal of the end cap and place the double u-cup and o-rings inside.

16. Assemble the end cap into the shaft carefully and tighten with the appropriate tool.

17. Take the housing from the bench wise and change the housing o-ring(10) with new one.

18. Inspect the o-rings(9-14) inside the elbow and if necessary change with new ones.

19. For dual flow joints; inspect the pim(16) on the siphon pipe(15) before assembling the pipe into the socket inside the elbow tightly.

21. Be careful to lubricate the outer o-rings before assembling the housing into the machine.

22. Tighten the housing to the machine with the bolts on the housing flange.

23. Install the elbow to the shaft. Before tightening both bolts; be sure that the bolts on the elbow is facing to the channel on the shaft.

24. Connect supply and return lines to the hoses.

25. Now the joint is ready to be placed back in service

ROTOTECH MAKİNA SAN. VE DIŞ. TİC. LTD. ŞTİ.

Perpa Tic. Merk. B Blok K:2 No:27

Şişli - İstanbul - Rep. Of TÜRKİYE

+90 (212) 320 02 33

+90 (212) 320 02 34

+90 (212) 320 06 73

www.rototech.com.tr

email:info@rototech.com.tr

